

COXDOME 2000 RANGE

The Coxdome 2000 Range is available either fixed or with a choice of two hinged ventilation options.

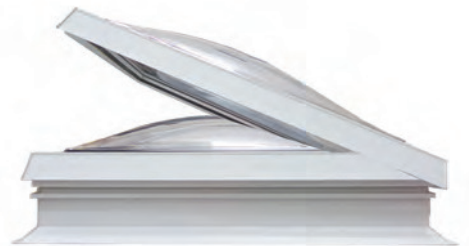
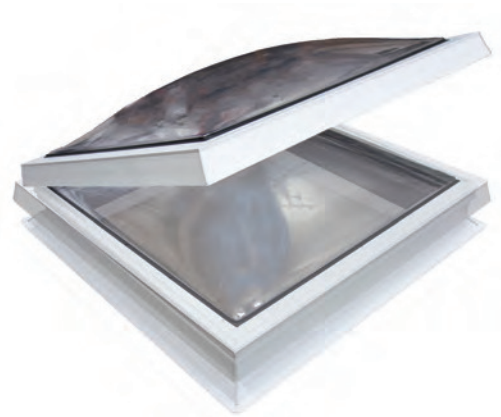
With sharp, smooth, clean UV protected white PVC-u profiles; the 2000 Range is one of the most aesthetically pleasing rooflights on the market. Coxdome's unique, concealed snap fixings avoid the need for visible fixing clips and also offer increased security. Supplied as a pre-fabricated factory finished unit the only means of removal of the glazing is by the specially designed 'disengaging tool'.

The R016, 160mm vertical upstand provides excellent thermal properties and combined with a triple skin dome offer an outstanding overall 'U' Value. Installing the 2000 Range is straight forward and hassle free and the upstand is compatible with most flat roof membrane systems.

Manual hinged units are supplied with a spindle gear, are operated from floor level by means of a winding rod, and offer controlled maximum ventilation to approximately 300mm.

Electrically operated units are supplied as standard with a toggle switch and offer approximately 400mm maximum ventilation. There are three optional fixed intermediary ventilation stages at 100mm, 200mm & 300mm.

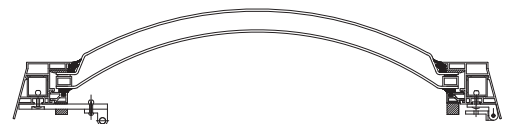
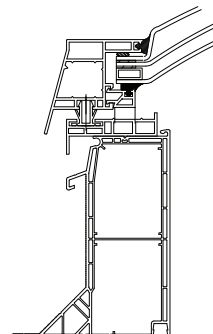
Remote control, wind, rain, and temperature sensors are available for specification with the 2000 Range.



FEATURES

- **Part L Compliant**
- **Double or triple skin glazing**
- **Clear, Diffused, Opal or Cool & Clear Glazing available**
- **BS476: Fire Rating Compliant**
- **EN 1873 Soft Body Tested**

| Rooflight Size | Glazing | | Controllable Vevtillation | | |
|----------------|---------|------|---------------------------|--------|----------|
| | MM | DOME | PYRAMID | MANUAL | ELECTRIC |
| 600 x 600 | • | • | • | • | • |
| 900 x 900 | • | • | • | • | • |
| 900 x 1200 | • | • | • | • | • |
| 1000 x 1000 | • | • | • | • | • |
| 1000 x 1500 | • | • | • | • | • |
| 1200 x 1200 | • | • | • | • | • |



Glazing is available spherical in Clear, Diffused, Opal, and Cool & Clear. Please refer to Section: Glazing for options, specifications and classifications.