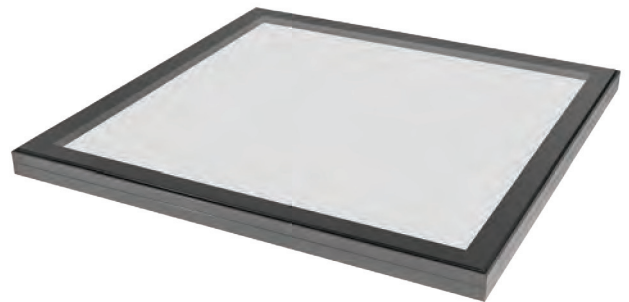


COXDOME FLAT GLASS

The Coxdome Flat Glass distinguishes itself from other modular units by the uninterrupted glass surface which offers pure natural daylight and clear panoramic views internally whilst providing a clean appearance in the external roof scape.

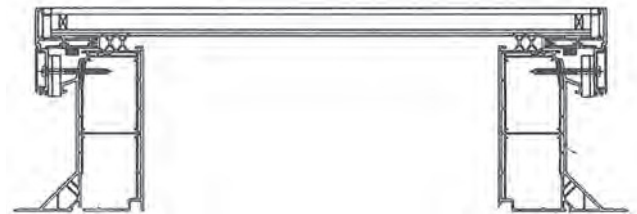
The aluminium frame profile is slim and isolated internally for thermal performance. The toughened outer glass panel has ceramic edge coating for a stylish finish.

The unit is fixed and can be installed onto a builder's kerb, or preformed upstand.



External Kerb Size (mm)	Daylight Size RO16 Upstand (mm)	Daylight Size Builders Upstand (mm)
750 x 750	600 x 600	650 x 650
900 x 900	750 x 750	800 x 800
900 x 1200	750 x 1050	800 x 1100
1000 x 1000	850 x 850	900 x 900
1000 x 1500	850 x 1350	900 x 1400
1000 x 1800	850 x 1650	900 x 1700
1000 x 2000	850 x 1850	900 x 1900
1200 x 1200	1050 x 1050	1100 x 1100
1500 x 1500	1350 x 1350	1400 x 1400

Insulated Kerb



Product Specification	
Installation Angle	0 - 7°
Installation	Screws with cover strip

Glass Specification	
Glass Assembly (minimum)	6mm toughened external with black ceramic print / argon filled cavity / 8.4mm laminated. Low E glass
Insulation	HR++
Insulation	U _g = 1.0 Wm ² K
Spacer	Warm edge spacer
Injury Safety according to EN 12600	1B1
LTA / ZTA	App. 69% / 49%
Sound Insulation (R _w)	App. 35dB

Frame Specification	
Frame	Aluminium
Coating	Powder coated aluminium slate grey (RAL 7015)
Drainage	At each corner of the frame
Waterproof Welded	At each corner of the frame

Builders Kerb

