



**PRICE LIST**  
July '20





# SEE THE LIGHT

# WITH COXDOME

# ROOFLIGHT PRODUCTS

- Experts in natural daylight and ventilations systems
- UK manufacturer established in 1954
- One of the most comprehensive stock holdings of any UK rooflight supplier
- A range of both Glass and Polycarbonate rooflights
- SHEV Systems available for all commercial and residential applications
- Offers a 24 hour delivery service

T: 0121 530 4230

E: [sales@coxdome.co.uk](mailto:sales@coxdome.co.uk)

W: [www.coxdome.co.uk](http://www.coxdome.co.uk)



# FLAT GLASS

Revolutionary glass rooflight to allow maximum natural light



## COXDOME FLAT GLASS

- Ideal for new build and refurbishment projects
- Exceptional noise reduction
- Can be installed onto existing builder's kerbs or preformed upstand
- Uninterrupted glass surface offers pure daylight
- Clear panoramic views internally
- Clean appearance from external roofscape
- Slim aluminium frame profile
- Isolated internally for excellent thermal performance
- Toughened outer glass panel
- Fixing screws concealed with flush cover for invisibility



EXTERNAL KERB SIZE (MM)	DAYLIGHT SIZE RO16 UPSTAND (MM)	DAYLIGHT SIZE BUILDERS UPSTAND (MM)
750 x 750	600 x 600	650 x 650
900 x 900	750 x 750	800 x 800
900 x 1200	750 x 1050	800 x 1100
1000 x 1000	850 x 850	900 x 900
1000 x 1500	850 x 1350	900 x 1400
1000 x 1800	850 x 1650	900 x 1700
1000 x 2000	850 x 1850	900 x 1900
1200 x 1200	1050 x 1050	1100 x 1100
1500 x 1500	1350 x 1350	1400 x 1400

PRODUCT SPECIFICATION	
Installation angle	0-7°
Installation	Screws with cover strip
Frame	Aluminium
Coating	Powder coated aluminium slate grey (RAL 7015)
Drainage	At each corner of frame
Waterproof welded	At each corner of frame
Glass assembly	6mm toughened external
Insulation (efficiency)	HR++
Insulation (U value)	1.0 W/M²K°
Insulation (sound)	Approx 35dB
Spacer	Warm edge
LTA/2TA	Approx 69% / 49%

# FLAT GLASS ROOFLIGHTS

Offering clear panoramic views, slim aluminium frame profile and improved sound attenuation when compared to polycarbonate. Perfect for new-build or refurbishment projects.



Product Code	Size		GLASS ONLY	Upstand 160mm uPVC Vertical		
	FINISHED OPENING SIZE (MM)	OVERALL GLASS SIZE (MM)		GLASS WITH UPSTAND (FIXED UNIT)	GLASS WITH UPSTAND (MANUAL HINGE)	GLASS WITH UPSTAND (ELECTRIC HINGE)
CFG1	600 x 600	750 x 750	£472	£600	£836	£1166
CFG2	600 x 900	750 x 1050	£524	£660	£900	£1250
CFG3	600 x 1200	750 x 1350	£634	£790	£1058	£1390
CFG4	700 x 700	850 x 850	£518	£650	£890	£1240
CFG5	800 x 800	950 x 950	£552	£700	£968	£1300
CFG6	900 x 900	1050 x 1050	£642	£790	£1058	£1390
CFG7	900 x 1200	1050 x 1350	£800	£958	£1258	£1692
CFG8	1000 x 1000	1150 x 1150	£766	£920	£1220	£1570
CFG9	1000 x 1500	1150 x 1650	£986	£1190	£1676	£1890
CFG10	1000 x 2000	1150 x 2150	£1205	£1564	N/A	£2345
CFG11	1200 x 1200	1350 x 1350	£972	£1160	£1496	£1850
CFG12	1200 x 2200	1350 x 2350	£1640	£1860	N/A	N/A

# COXDOME TRADE RANGE

The high quality, cost-effective, universal 'out-of-plane' rooflight system



## COXDOME TRADE RANGE

- Manufactured to European Standards and CE marking to EN 1873
- Manufactured from extruded white PVC-u
- Choice of 150mm splayed, or 160mm vertical upstands in UV-stable white PVC-u
- Available in single, double, triple or quadruple skin polycarbonate, impact resistant glazing in spherical or pyramidal specifications
- Excellent waterproofing properties when fitted to manufacturer's instructions
- High security fixings as standard
- Glazing available in clear, diffused, opal or cool & clear

## SUMMARY OF BUILDING REGULATIONS FOR GLAZING

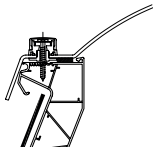
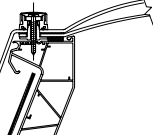
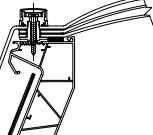
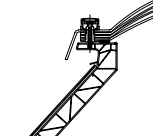
### Non-fragility ACR(M)001:2019 – 'Test for the Fragility of Profiled Sheet Roofing Assemblies'.

All trade domes are classified to Class B Non-Fragile according to ACR(M)001:2019 and when tested, demonstrated full compliance with EN 1873 soft body test, based on an impact of 1200 Joules.

### Fire Classification EN 13501-1 – 'Fire test to Building Material – Classification'.

All trade rooflights are manufactured using minimum 3mm polycarbonate. According to EN 13501-1, this achieves B-s1-d0 and therefore attains Class 1 certification. TP(a) is realised with a solid polycarbonate sheet minimum 3mm thick.

## DOMES, CIRCULAR AND PYRAMID/TRAPEZOID GLAZING

	GLAZING	LIGHT TRANSMISSION	'G' VALUE SOLAR HEAT GAIN	'UD' VALUE	SOUND REDUCTION (dB)	DAYLIGHT SIZE FIRE CLASSIFICATION	IMPACT RESISTANCE
SINGLE 	Clear	88%	82%	5.0W/m²K*	12dB	1-3mm: B-s1-d0	> 200 N/mm²
	Diffused	77%	67%				
	Opal	44%	51%				
	Cool & Clear	48%	36%				
DOUBLE 	Clear	77%	67%	2.6W/m²K*	20dB	1-3mm: B-s1-d0	> 200 N/mm²
	Diffused	77%	67%				
	Opal	44%	51%				
	Cool & Clear	48%	36%				
TRIPLE 	Clear	71%	57%	1.7W/m²K*	22dB	1-3mm: B-s1-d0	> 200 N/mm²
	Diffused	71%	57%				
	Opal	62%	52%				
	Cool & Clear	45%	31%				
QUADRUPLE 	Clear	66%	49%	1.3W/m²K*	23dB	1-3mm: B-s1-d0	> 200 N/mm²
	Diffused	66%	49%				
	Opal	57%	45%				
	Cool & Clear	41%	26%				

\*U-values calculated according to EN 1873 and based on a 1800x1800mm domelight. Sound reduction (dB) according to DIN52210.

\*Fire classification according to BS EN 13501:1 2007.

# UPSTANDS



## COXDOME TRADE RANGE UPSTANDS

Coxdome Trade Range upstands provide a watertight thermal break between the finished roof and the rooflight. They often offer a more thermally efficient solution to the standard builder's kerb and help improve the overall U-value of the unit.

## TECHNICAL SPECIFICATION

- Available in splayed 150mm (SF15) and vertical 160mm (RO16)
- High-impact resistant PVC-u
- Completely recyclable
- Manufactured to latest environmental standards
- Double-walled and watertight welded
- UV-stable, ensuring brilliant white finish and avoiding need for decoration
- Compatible with most flat roof membranes including single ply, GRP, hot melt, asphalt, liquid and lead
- Vertical uPVC vertical riser acts as an insulation stop to maintain the 150mm above finished roof surface

	HEIGHT	MATERIAL	PROFILE WIDTH	'UD' VALUE	FIRE RESISTANCE
SF15	150mm	PVC-u	25mm	1.8 W/m <sup>2</sup> K	D-s3-d1
SF15 +	300mm	PVC-u	25mm	1.8 W/m <sup>2</sup> K	D-s3-d1
RO16	160mm	PVC-u	65mm	0.2 W/m <sup>2</sup> K Without insulation 1.0 W/m <sup>2</sup> K	D

# VENTILATION

## BACKGROUND VENTILATION

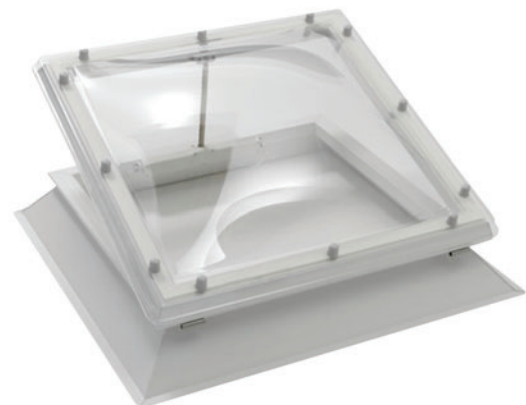
Background ventilation is available with the Trade Range in two options:

## PERMANENT VENTILATION

In hard-to-access areas, or where security is a primary consideration, 'non-controllable' permanent ventilation offers continuous ventilation around the perimeter of the dome. Spacers are inserted between the factory assembled polycarbonate dome and the upstand. The shaped lip on the edge of the outer skin is engineered for maximum weathering and prevents water ingress.

## HIT AND MISS VENTILATION

This is offered by means of a controllable trickle ventilator; airflow is afforded by the use of adjustable tumblers. Internal and external parts are constructed from moulded PVC-u and can be fitted to just two sides, or all four sides, of any of the upstand options.\*



## HIT AND MISS VENTILATION PERFORMANCE DATA

VENT TYPE	EQA (EQUIVALENT AREA)	GEOMETRIC FREE AREA
2000 + Hood + Grill	1360mm <sup>2</sup>	2000mm <sup>2</sup>
4000 + Hood + Grill	2580mm <sup>2</sup>	4000mm <sup>2</sup>

\*Whilst controllable ventilation can be fitted to a 150mm upstand, please note that BS6229:2003 – 'Code of practice for flat roofs with continuously supported coverings', outlines that the waterproofing upstand detail should terminate at least 150mm above the uppermost roof surface, to which the roof covering is bonded or dressed.

# VENTILATION OPTIONS

Ventilation is the process of changing or replacing air in any space to provide high indoor air quality. It is often the link between our internal space and the outdoor elements. The correct relationship between insulation, heating, solar gain and ventilation must be achieved in order to provide a pleasant comfortable and productive indoor space.

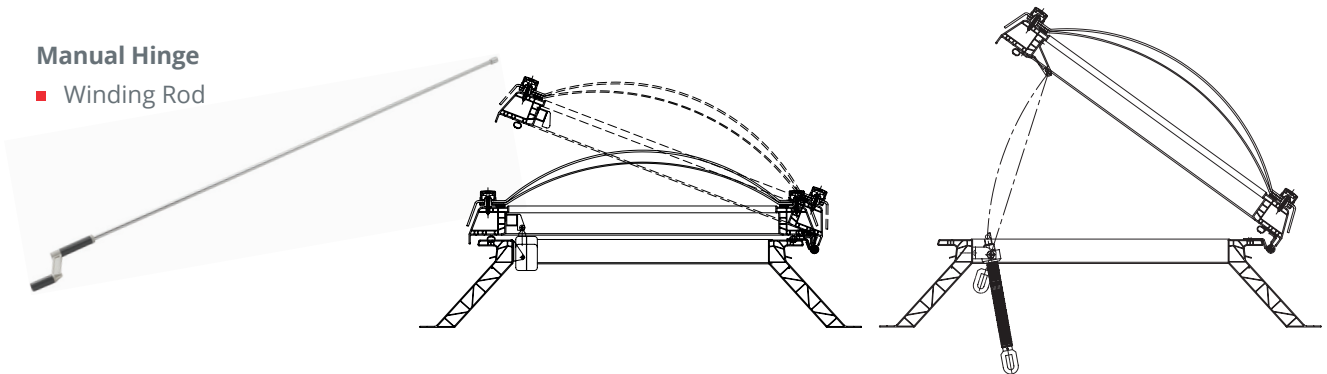
**With this in mind, the Trade Range is available with the following options:**

- Hinged opening domes are available either manually or electronically operated
- The manual option is supplied with a spindle gear and is operated from floor level using a winding pole; maximum ventilation is approximately 300mm
- The electronic option uses a chain link actuator and is operated from a 240V power supply
- Maximum ventilation is approximately 400mm, with optional intermediary positions at 100mm, 200mm and 300mm

## ACCESSORIES

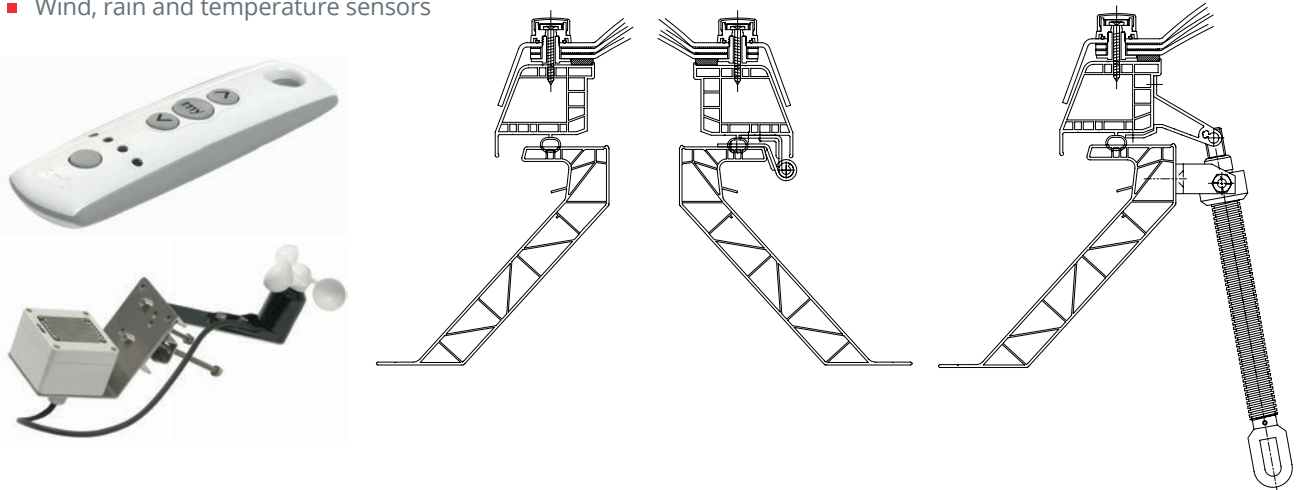
### Manual Hinge

- Winding Rod



### Electric Hinge

- Remote Control
- Wind, rain and temperature sensors





# TRADE RANGE – CIRCULAR

The attractive modern glazing solution that adds character to any interior space

## COXDOME CIRCULAR

Coxdome Circular is available in a range of sizes with double, triple or quadruple skins.

Manufactured with a double layer Glass Reinforced Plastic (GRP) and polyurethane insulation, the upstands are compatible with most roofing materials.

## TECHNICAL SPECIFICATION

- Spherical glazing available in clear, diffused, opal or cool & clear
- Hinged opening domes are available either manually or electronically operated
- The manual option is supplied with a spindle gear and is operated from floor level using a winding pole; maximum ventilation is approximately 300mm
- The electronic option uses a chain link actuator and is operated from a 240V power supply
- Maximum ventilation is approximately 400mm, with optional intermediary positions at 100mm, 200mm and 300mm

**NOTE: Hit and Miss background ventilation is not available in the Circular range. Background ventilation is by means of permanent ventilation only.**



	MATERIAL	PROFILE WIDTH	'UD' VALUE	FIRE RESISTANCE
150MM	GRP	10mm	1.6W/m²K	Class E
300MM	GRP	20mm	0.95W/m²K	Class E
500MM	GRP	10mm	0.95W/m²K	Class E

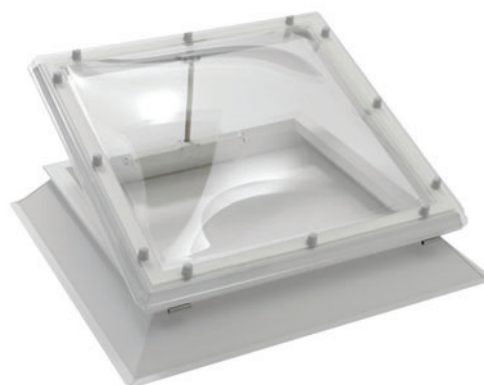
Rooflight	Opening		Upstand		
	MANUAL	HINGE	150MM GRP	300MM GRP	500MM GRP
600mm	✓	✓	✓	✓	✓
700mm	✓	✓	✓	✓	✓
800mm	✓	✓	✓	✓	✓
900mm	✓	✓	✓	✓	✓
1000mm	✓	✓	✓	✓	✓
1100mm	✓	✓	✓	✓	✓
1200mm	✓	✓	✓	✓	✓
1400mm	✓	✓	✓	✓	✓
1600mm	✓	✓	✓	✓	✓
1800mm	✓	✓	✓	✓	✓
2000mm	✓	✓	✓	✓	✓
2200mm	✓	✓	✓	✓	✓



# TRADE RANGE

## SQUARE

The high quality, cost effective, universal 'out-of-plane' rooflight system to suit refurbishment and new-build applications. Available in square, rectangular and circular profiles.



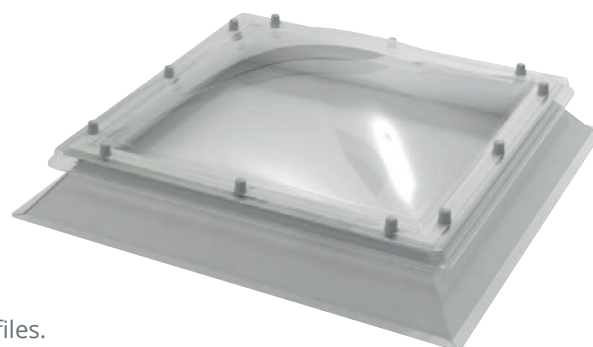
### Splayed 150mm Kerb - Square

Product Code	UPSTAND OPENING SIZE (MM)	DAYLIGHT SIZE (MM)	Polycarbonate Dome Glazing		Polycarbonate Pyramid Glazing		Opening Vent	
			DOUBLE PC/PC	TRIPLE PC/PC/PC	DOUBLE PC/PC	TRIPLE PC/PC/PC	MANUAL	ELECTRIC
TRS1	600 x 600	400 x 400	£260	£305	£325	£381	£147	£431
TRS2	650 x 650	450 x 450	£286	£340	£357.50	£424	£148	£431
TRS3	700 x 700	500 x 500	£312	£374	£390	£468	£149	£431
TRS4	750 x 750	550 x 550	£335	£404	£418.75	£505	£158	£431
TRS5	800 x 800	600 x 600	£357	£428	£446.25	£535	£161	£461
TRS6	850 x 850	650 x 650	£390	£467	£486.88	£583	£165	£480
TRS7	900 x 900	700 x 700	£422	£505	£527.50	£631	£168	£499
TRS8	950 x 950	750 x 750	£441	£530	£551.25	£662	£174	£499
TRS9	1000 x 1000	800 x 800	£460	£554	£575	£693	£179	£499
TRS10	1050 x 1050	850 x 850	£503	£608	£628.75	£759	£183	£507
TRS11	1100 x 1100	900 x 900	£546	£661	£682.50	£826	£187	£515
TRS12	1150 x 1150	950 x 950	£575	£697	£718.75	£871	£189	£546
TRS13	1200 x 1200	1000 x 1000	£604	£732	£755	£915	£190	£577
TRS14	1250 x 1250	1050 x 1050	£650	£788	£812.50	£985	£233	£566
TRS15	1300 x 1300	1100 x 1100	£731	£882	£913.75	£1103	£276	£543
TRS16	1350 x 1350	1150 x 1150	£760	£924	£949.38	£1154	£276	£573
TRS17	1400 x 1400	1200 x 1200	£823	£1003	£1028.75	£1254	£276	£591
TRS18	1450 x 1450	1250 x 1250	£870	£1067	£1087.50	£1334	£276	£637
TRS19	1500 x 1500	1300 x 1300	£917	£1131	£1146.25	£1414	£276	£682
TRS20	1550 x 1550	1350 x 1350	£971	£1198	£1213.75	£1498	£350	£694
TRS21	1600 x 1600	1400 x 1400	£1025	£1265	£1281.25	£1581	£424	£706
TRS22	1650 x 1650	1450 x 1450	£1047	£1275	£1308.75	£1593	£424	£706
TRS23	1700 x 1700	1500 x 1500	£1069	£1284	£1336.25	£1605	£424	£706
TRS24	1750 x 1750	1550 x 1550	£1128	£1415	£1410	£1769	£438	£706
TRS25	1800 x 1800	1600 x 1600	£1199	£1477	£1498.75	£1846	£444	£706
TRS26	1850 x 1850	1650 x 1650	£1219	£1519	£1523.75	£1899	£458	£706
TRS27	1900 x 1900	1700 x 1700	£1247	£1537	£1558.75	£1921	£465	£706

# TRADE RANGE

## RECTANGLE

The high quality, cost effective, universal 'out-of-plane' rooflight system to suit refurbishment and new-build applications. Available in square, rectangular and circular profiles.



### Splayed 150mm Kerb - Rectangle

Product Code	UPSTAND OPENING SIZE (MM)	DAYLIGHT SIZE (MM)	Polycarbonate Dome Glazing		Polycarbonate Pyramid Glazing		Opening Vent	
			DOUBLE PC/PC	TRIPLE PC/PC/PC	DOUBLE PC/PC	TRIPLE PC/PC/PC	MANUAL	ELECTRIC
TRR1	600 x 900	500 x 700	£316	£376	£395	£470	£154	£510
TRR2	600 x 1200	400 x 100	£403	£477	£504	£596	£168	£515
TRR3	700 x 1000	500 x 800	£367	£455	£459	£569	£205	£515
TRR4	700 x 1200	500 x 1000	£443	£547	£554	£684	£243	£515
TRR5	700 x 1300	500 x 1100	£450	£565	£563	£706	£276	£555
TRR6	700 x 1900	500 x 1700	£647	£834	£809	£1043	£276	£555
TRR7	800 x 1100	600 x 900	£480	£580	£600	£725	£170	£536
TRR8	800 x 1400	600 x 1200	£618	£757	£773	£946	£276	£555
TRR9	900 x 1200	700 x 1000	£495	£602	£619	£753	£174	£536
TRR10	900 x 1500	700 x 1300	£620	£760	£775	£950	£190	£585
TRR11	900 x 1800	700 x 1600	£740	£899	£925	£1124	£276	£613
TRR12	1000 x 1200	800 x 1000	£576	£692	£720	£865	£276	£555
TRR13	1000 x 1300	800 x 1100	£588	£718	£735	£898	£276	£585
TRR14	1000 x 1500	800 x 1300	£725	£898	£906	£1123	£276	£609
TRR15	1000 x 1800	800 x 1600	£825	£1032	£1031	£1290	£276	£646
TRR16	1000 x 1900	800 x 1700	£833	£1057	£1041	£1321	£276	£646
TRR17	1000 x 2000	800 x 1800	£877	£1055	£1096	£1319	£276	£677
TRR18	1000 x 2400	800 x 2200	£940	£1179	£1175	£1474	£289	£708
TRR19	1000 x 2500	800 x 2300	£976	£1229	£1220	£1536	£289	£708
TRR20	1000 x 3000	800 x 2800	£1283	£1467	£1604	£1834	£289	£756
TRR21	1100 x 1400	900 x 1200	£785	£997	£981	£1246	£276	£646
TRR22	1100 x 1500	900 x 1300	£800	£1016	£1000	£1270	£276	£646
TRR23	1100 x 1700	900 x 1500	£815	£1036	£1019	£1295	£276	£646
TRR24	1100 x 1800	900 x 1600	£832	£1058	£1040	£1323	£276	£646
TRR25	1200 x 1500	1000 x 1300	£780	£971	£975	£1214	£276	£646
TRR26	1200 x 1700	1000 x 1500	£839	£1040	£1049	£1300	£276	£646

# TRADE RANGE

## RECTANGLE

The high quality, cost effective, universal 'out-of-plane' rooflight system to suit refurbishment and new-build applications. Available in square, rectangular and circular profiles.

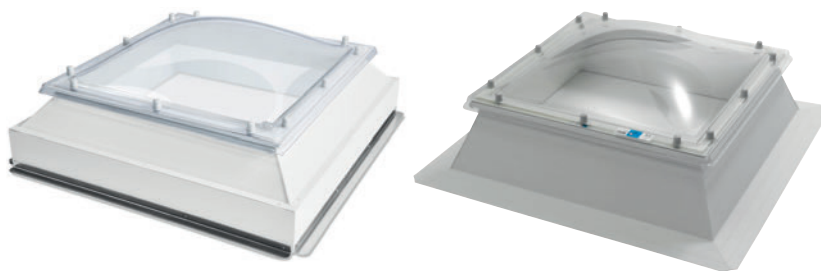


### Splayed 150mm Kerb – Rectangle

Product Code	UPSTAND OPENING SIZE (MM)	DAYLIGHT SIZE (MM)	Polycarbonate Dome Glazing		Polycarbonate Pyramid Glazing		Opening Vent	
			DOUBLE PC/PC	TRIPLE PC/PC/PC	DOUBLE PC/PC	TRIPLE PC/PC/PC	MANUAL	ELECTRIC
TRR27	1200 x 1800	1000 x 1600	£825	£1019	£1031	£1274	£276	£646
TRR28	1200 x 2000	1000 x 1800	£870	£1085	£1088	£1356	£438	£711
TRR29	1200 x 2100	1000 x 1900	£907	£1152	£1134	£1440	£438	£711
TRR30	1200 x 2200	1000 x 2000	£1019	£1305	£1274	£1631	£438	£711
TRR31	1200 x 2400	1000 x 2200	£1239	£1553	£1549	£1941	£438	£711
TRR32	1200 x 2500	1000 x 2300	£1303	£1825	£1629	£2281	£438	£711
TRR33	1200 x 2700	1000 x 2500	£1344	£2023	£1680	£2529	£438	£711
TRR34	1200 x 3000	1000 x 2800	£1416	£2280	£1770	£2850	£438	£711
TRR35	1300 x 1500	1100 x 1300	£845	£1001	£1056	£1251	£289	£708
TRR36	1300 x 1900	1100 x 1700	£924	£1165	£1155	£1456	£289	£708
TRR37	1300 x 2000	1100 x 1800	£1011	£1256	£1264	£1570	£438	£726
TRR38	1300 x 2200	1100 x 2000	£1126	£1398	£1408	£1748	£438	£726
TRR39	1300 x 2500	1100 x 2300	£1230	£1570	£1538	£1963	£438	£726
TRR40	1400 x 2000	1200 x 1800	£1143	£1334	£1429	£1668	£438	£726
TRR41	1400 x 2500	1200 x 2300	£1365	£1699	£1706	£2124	£438	£726
TRR42	1500 x 1800	1300 x 1600	£991	£1307	£1239	£1634	£289	£708
TRR43	1500 x 2100	1300 x 1900	£1140	£1455	£1425	£1819	£438	£733
TRR44	1500 x 2400	1300 x 2200	£1226	£1523	£1533	£1904	£438	£770
TRR45	1500 x 2500	1300 x 2300	£1354	£1651	£1693	£2064	£438	£770
TRR46	1500 x 2700	1300 x 2500	£1481	£1778	£1851	£2223	£438	£801
TRR47	1500 x 3000	1300 x 2800	£1553	£1839	£1941	£2299	£438	£832
TRR48	1800 x 2400	1600 x 2200	£1445	£1658	£1806	£2073	£438	£733
TRR49	1800 x 2500	1600 x 2300	£1567	£1783	£1959	£2229	£438	£733
TRR50	1800 x 2700	1600 x 2500	£1692	£1905	£2115	£2381	£438	£733
TRR51	1800 x 3000	1600 x 2800	£1813	£2029	£2266	£2536	£438	£733



# TRADE RANGE



## SQUARE

The high quality, cost effective, universal 'out-of-plane' rooflight system to suit refurbishment and new-build applications. Available in square and rectangular profiles.

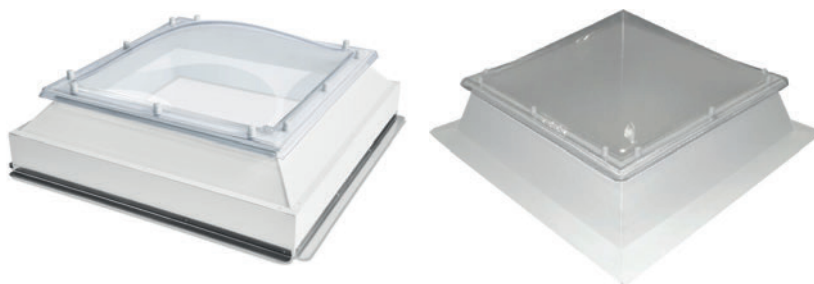
In addition, this 300mm high kerb can be ordered splayed or with a 150mm vertical section which also acts as a built-in insulation stop.

At time of ordering please stipulate either **splayed** or **150+**

### 300mm Kerb - Square

Product Code	UPSTAND OPENING SIZE (MM)	DAYLIGHT SIZE (MM)	Polycarbonate Dome Glazing		Polycarbonate Pyramid Glazing		Opening Vent	
			DOUBLE PC/PC	TRIPLE PC/PC/PC	DOUBLE PC/PC	TRIPLE PC/PC/PC	MANUAL	ELECTRIC
TRS1	600 x 600	400 x 400	£350	£395	£437.50	£494	£147	£431
TRS2	650 x 650	450 x 450	£378	£431	£471.88	£539	£148	£431
TRS3	700 x 700	500 x 500	£405	£467	£506.25	£584	£149	£431
TRS4	750 x 750	550 x 550	£434	£503	£542.50	£629	£158 £161	£431
TRS5	800 x 800	600 x 600	£460	£531	£575	£664		£461
TRS6	850 x 850	650 x 650	£489	£566	£610.63	£707	£165	£480
TRS7	900 x 900	700 x 700	£517	£600	£646.25	£750	£168	£499
TRS8	950 x 950	750 x 750	£540	£628	£674.38	£785	£174	£499
TRS9	1000 x 1000	800 x 800	£562	£656	£702.50	£820	£179	£499
TRS10	1050 x 1050	850 x 850	£608	£712	£759.38	£890	£183	£507
TRS11	1100 x 1100	900 x 900	£653	£768	£816.25	£960	£187	£515
TRS12	1150 x 1150	950 x 950	£686	£808	£857.50	£1009	£189	£546
TRS13	1200 x 1200	1000 x 1000	£719	£847	£898.75	£1059	£190	£577
TRS14	1250 x 1250	1050 x 1050	£768	£906	£959.38	£1132	£233	£566
TRS15	1300 x 1300	1100 x 1100	£852	£1003	£1065	£1254	£276	£543
TRS16	1350 x 1350	1150 x 1150	£880	£1044	£1099.38	£1304	£276	£573
TRS17	1400 x 1400	1200 x 1200	£943	£1123	£1178.75	£1404	£276	£591
TRS18	1450 x 1450	1250 x 1250	£992	£1189	£1239.38	£1486	£276	£637
TRS19	1500 x 1500	1300 x 1300	£1040	£1254	£1300	£1568	£276	£682
TRS20	1550 x 1550	1350 x 1350	£1094	£1321	£1366.88	£1651	£350	£694
TRS21	1600 x 1600	1400 x 1400	£1147	£1387	£1433.75	£1734	£424	£706
TRS22	1650 x 1650	1450 x 1450	£1175	£1402	£1468.13	£1753	£424	£706
TRS23	1700 x 1700	1500 x 1500	£1202	£1417	£1502.50	£1771	£424	£706
TRS24	1750 x 1750	1550 x 1550	£1256	£1543	£1570	£1929	£438	£706
TRS25	1800 x 1800	1600 x 1600	£1328	£1606	£1660	£2008	£444	£706
TRS26	1850 x 1850	1650 x 1650	£1346	£1646	£1682.50	£2058	£458	£706
TRS27	1900 x 1900	1700 x 1700	£1372	£1662	£1715	£2078	£465	£706

## TRADE RANGE



### RECTANGLE

The high quality, cost effective, universal 'out-of-plane' rooflight system to suit refurbishment and new-build applications. Available in square and rectangular profiles.

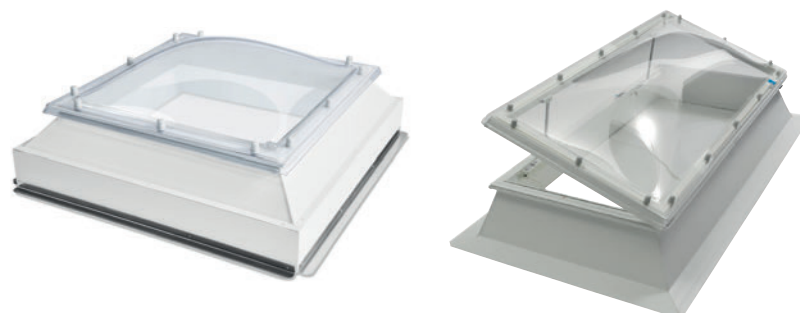
In addition, this 300mm high kerb can be ordered splayed or with a 150mm vertical section which also acts as a built-in insulation stop.

At time of ordering please stipulate either **splayed** or **150+**

#### 300mm High Kerb – Rectangle

Product Code	UPSTAND OPENING SIZE (MM)	DAYLIGHT SIZE (MM)	Polycarbonate Dome Glazing		Polycarbonate Pyramid Glazing		Opening Vent	
			DOUBLE PC/PC	TRIPLE PC/PC/PC	DOUBLE PC/PC	TRIPLE PC/PC/PC	MANUAL	ELECTRIC
TRR1	600 x 900	500 x 700	£416	£476	£520	£595	£154	£510
TRR2	600 x 1200	400 x 100	£498	£572	£623	£715	£168	£515
TRR3	700 x 1000	500 x 800	£469	£557	£586	£696	£205	£515
TRR4	700 x 1200	500 x 1000	£547	£651	£684	£814	£243	£515
TRR5	700 x 1300	500 x 1100	£570	£685	£713	£856	£276	£555
TRR6	700 x 1900	500 x 1700	£803	£990	£1004	£1238	£276	£555
TRR7	800 x 1100	600 x 900	£581	£681	£726	£851	£170	£536
TRR8	800 x 1400	600 x 1200	£725	£864	£906	£1080	£276	£555
TRR9	900 x 1200	700 x 1000	£606	£713	£758	£891	£174	£536
TRR10	900 x 1500	700 x 1300	£734	£874	£918	£1093	£190	£585
TRR11	900 x 1800	700 x 1600	£799	£958	£999	£1198	£276	£613
TRR12	1000 x 1200	800 x 1000	£708	£824	£885	£1030	£276	£555
TRR13	1000 x 1300	800 x 1100	£695	£825	£869	£1031	£276	£585
TRR14	1000 x 1500	800 x 1300	£839	£1012	£1049	£1265	£276	£609
TRR15	1000 x 1800	800 x 1600	£946	£1153	£1183	£1441	£276	£646
TRR16	1000 x 1900	800 x 1700	£1007	£1231	£1259	£1539	£276	£646
TRR17	1000 x 2000	800 x 1800	£998	£1176	£1248	£1470	£276	£677
TRR18	1000 x 2400	800 x 2200	£1058	£1297	£1323	£1621	£289	£708
TRR19	1000 x 2500	800 x 2300	£1096	£1349	£1370	£1686	£289	£708
TRR20	1000 x 3000	800 x 2800	£1404	£1588	£1755	£1985	£289	£756
TRR21	1100 x 1400	900 x 1200	£879	£1091	£1099	£1364	£276	£646
TRR22	1100 x 1500	900 x 1300	£956	£1172	£1195	£1465	£276	£646
TRR23	1100 x 1700	900 x 1500	£983	£1204	£1229	£1505	£276	£646
TRR24	1100 x 1800	900 x 1600	£1154	£1380	£1443	£1725	£276	£646
TRR25	1200 x 1500	1000 x 1300	£903	£1094	£1129	£1368	£276	£646
TRR26	1200 x 1700	1000 x 1500	£957	£1158	£1196	£1448	£276	£646

## TRADE RANGE



### RECTANGLE

The high quality, cost effective, universal 'out-of-plane' rooflight system to suit refurbishment and new-build applications. Available in square and rectangular profiles.

In addition, this 300mm high kerb can be ordered splayed or with a 150mm vertical section which also acts as a built-in insulation stop.

At time of ordering please stipulate either **splayed** or **150+**

#### Splayed 300mm Kerb - Rectangle

Product Code	UPSTAND OPENING SIZE (MM)	DAYLIGHT SIZE (MM)	Polycarbonate Dome Glazing		Polycarbonate Pyramid Glazing		Opening Vent	
			DOUBLE PC/PC	TRIPLE PC/PC/PC	DOUBLE PC/PC	TRIPLE PC/PC/PC	MANUAL	ELECTRIC
TRR27	1200 x 1800	1000 x 1600	£948	£1142	£1185	£1428	£276	£646
TRR28	1200 x 2000	1000 x 1800	£1006	£1221	£1258	£1526	£438	£711
TRR29	1200 x 2100	1000 x 1900	£1031	£1276	£1289	£1595	£438	£711
TRR30	1200 x 2200	1000 x 2000	£1154	£1440	£1443	£1800	£438	£711
TRR31	1200 x 2400	1000 x 2200	£1363	£1677	£1704	£2096	£438	£711
TRR32	1200 x 2500	1000 x 2300	£1414	£1936	£1768	£2420	£438	£711
TRR33	1200 x 2700	1000 x 2500	£1443	£2122	£1804	£2653	£438	£711
TRR34	1200 x 3000	1000 x 2800	£1516	£2380	£1895	£2975	£438	£711
TRR35	1300 x 1500	1100 x 1300	£957	£1113	£1196	£1391	£289	£708
TRR36	1300 x 1900	1100 x 1700	£1116	£1357	£1395	£1696	£289	£708
TRR37	1300 x 2000	1100 x 1800	£1188	£1433	£1485	£1791	£438	£726
TRR38	1300 x 2200	1100 x 2000	£1320	£1592	£1650	£1990	£438	£726
TRR39	1300 x 2500	1100 x 2300	£1437	£1777	£1796	£2221	£438	£726
TRR40	1400 x 2000	1200 x 1800	£1271	£1462	£1589	£1828	£438	£726
TRR41	1400 x 2500	1200 x 2300	£1599	£1933	£1999	£2416	£438	£726
TRR42	1500 x 1800	1300 x 1600	£1115	£1431	£1394	£1789	£289	£708
TRR43	1500 x 2100	1300 x 1900	£1262	£1577	£1578	£1971	£438	£733
TRR44	1500 x 2400	1300 x 2200	£1349	£1646	£1686	£2058	£438	£770
TRR45	1500 x 2500	1300 x 2300	£1476	£1773	£1845	£2216	£438	£770
TRR46	1500 x 2700	1300 x 2500	£1604	£1901	£2005	£2376	£438	£801
TRR47	1500 x 3000	1300 x 2800	£1676	£1962	£2095	£2453	£438	£832
TRR48	1800 x 2400	1600 x 2200	£1574	£1787	£1968	£2234	£438	£733
TRR49	1800 x 2500	1600 x 2300	£1696	£1912	£2120	£2390	£438	£733
TRR50	1800 x 2700	1600 x 2500	£1821	£2034	£2276	£2543	£438	£733
TRR51	1800 x 3000	1600 x 2800	£1941	£2157	£2426	£2696	£438	£733



# TRADE RANGE

## CIRCULAR

The high quality, cost effective, universal 'out-of-plane' rooflight system to suit refurbishment and new-build applications. Available in square, rectangular and circular profiles.



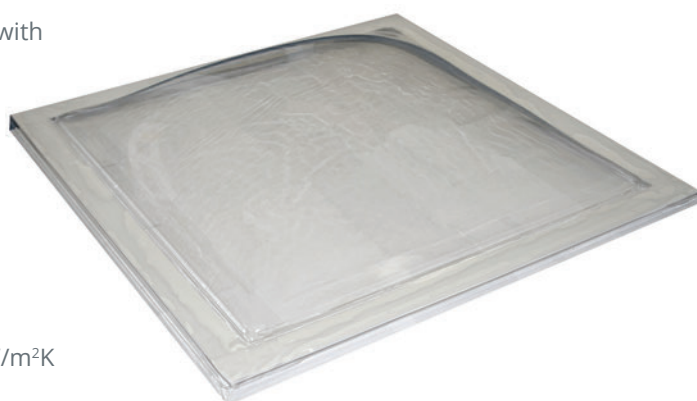
Product Code	Rooflight Size	150MM HIGH GRP UPSTAND	300MM HIGH GRP UPSTAND	DOUBLE SKIN POLYCARBONATE	TRIPLE SKIN POLYCARBONATE	MANUAL OPENER	ELECTRIC OPENER
TRC1	600	£144	£362	£197	£257	£230	£611
TRC2	700	£159	£380	£205	£276	£264	£378
TRC3	800	£173	£403	£231	£308	£277	£699
TRC4	900	£200	£467	£259	£350	£300	£742
TRC5	1000	£214	£496	£285	£375	£310	£784
TRC6	1100	£236	£516	£307	£411	£319	£826
TRC7	1200	£249	£534	£344	£471	£352	£870
TRC8	1400	£321	£671	£518	£727	£685	£1018
TRC9	1500	£341	£731	£558	£781	£866	£1509
TRC10	1800	£423	£895	£721	£1005	£911	£1555
TRC11	2000	£472	£1025	£787	£1127	£984	£1628

# GALAXY

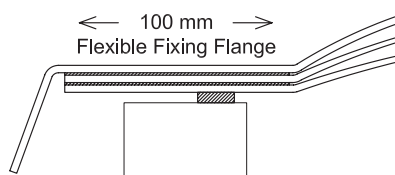
The 'dome-only' solution for the refurbishment and replacement of rooflights fitted to existing kerbs and upstands

## COXDOME GALAXY RANGE

- Designed to be fitted to existing builder's kerbs
- 100mm flanged polycarbonate unit, ensures a fit with most kerbs without the need for adjustment
- Ideal for refurbishments where only glazing needs to be replaced
- Manufactured using 3mm polycarbonate which achieves B-s1-d0 and therefore attains Class 1 certification (according to EN 13501-1:2007)
- Class B non-fragile to ACR[M]001:2014
- Class 1 fire performance to BS476 Pt7
- In triple skin format, Galaxy has a U-value of 1.7W/m<sup>2</sup>K



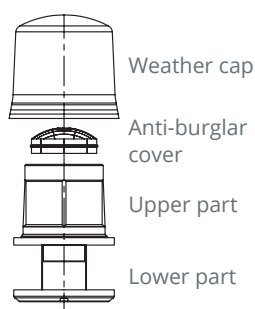
All sizes available in single, double, triple and quadruple skin. Clear or diffused glazing options.



Minimum 50mm builder's kerb required: ideally 100mm maximum

### IMPORTANT NOTE:

The glazing tape between the polycarbonate layers is 100mm and therefore can be visible on builder's kerbs of less than 100mm width.

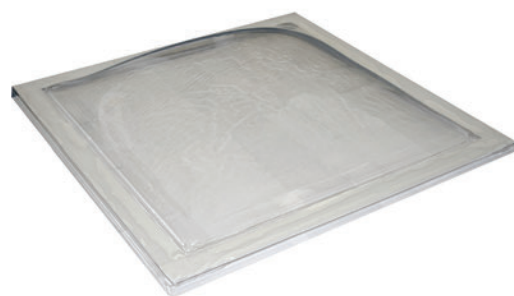


All Galaxy domes are supplied undrilled for maximum flexibility. Pyramids, trapezoids and circular domes are not available in the Galaxy range.

GALAXY DOME SIZE (TO OUTER EDGE)	MIN EXT KERB	MAX EXT KERB
600 x 600	510 x 510	610 x 610
600 x 900	510 x 810	610 x 910
600 x 1200	510 x 1120	610 x 1230
600 x 1800	510 x 1730	610 x 1830
750 x 750	660 x 660	760 x 760
750 x 900	660 x 810	760 x 910
900 x 900	810 x 810	910 x 910
900 x 1200	810 x 1120	910 x 1220
900 x 1800	810 x 1730	910 x 1830
1050 x 1050	970 x 970	1070 x 1070
1050 x 1500	970 x 1420	1070 x 1520
1200 x 1200	1120 x 1120	1230 x 1230
1200 x 1800	1120 x 1730	1230 x 1830
1200 x 2400	1120 x 2340	1230 x 2440
1500 x 1500	1420 x 1420	1520 x 1520
1800 x 1800	1730 x 1730	1830 x 1830

# GALAXY

The 'dome only' solution for the refurbishment and replacement of rooflights already fitted to existing kerbs or upstands.



Product Code	Size	Single	Double	Triple	Quadruple	Min Ext Kerb	Max Ext Kerb
CGAL1	600 x 600	£77	£152	£233.42	£387.90	510 x 510	610 x 610
CGAL2	600 x 900	£138	£280	£432.52	£649.92	510 x 810	610 x 910
CGAL3	600 x 1200	£159	£321	£495.45	£743.76	510 x 1120	610 x 1220
CGAL4	600 x 1800	£309	£619	£957.72	£1438.30	510 x 1730	610 x 1830
CGAL5	750 x 750	£105	£209	£324.94	£486.30	660 x 660	760 x 760
CGAL6	750 x 900	£157	£309	£479.44	£718.58	660 x 810	760 x 910
CGAL7	900 x 900	£138	£280	£432.52	£649.92	810 x 810	910 x 910
CGAL8	900 x 1200	£169	£339	£524.06	£786.09	810 x 1120	910 x 1220
CGAL9	900 x 1800	£331	£669	£1035.52	£1553.86	810 x 1730	910 x 1830
CGAL10	1050 x 1050	£159	£321	£495.45	£748.33	970 x 970	1070 x 1070
CGAL11	1050 x 1500	£322	£638	£987.48	£1481.78	970 x 1420	1070 x 1520
CGAL12	1200 x 1200	£216	£428	£664.80	£996.62	1120 x 1120	1220 x 1220
CGAL13	1200 x 1800	£410	£819	£1267.81	£1902.86	1120 x 1730	1220 x 1830
CGAL14	1200 x 2400	£528	£1059	£1637.40	£2456.66	1120 x 2340	1220 x 2440
CGAL15	1500 x 1500	£410	£823	£1267.81	£1902.86	1420 x 1420	1520 x 1520
CGAL16	1800 x 1800	£528	£1059	£1637.40	£2456.66	1730 x 1730	1830 x 1830



# SHEV SMOKE SYSTEMS

For the essential flow of smoke and hot air out of a building in the event of fire – certified to EN12101-2

## COXDOME SHEV SYSTEMS

In the event of a fire, the greatest immediate danger to the occupants of a building, comes from smoke, not heat. Even a small fire can fill a large building with smoke very rapidly, hindering vision, blocking escape routes and causing smoke inhalation.

Automatic Smoke Heat Exhaust Ventilation (SHEV) is the recognised solution.

SHEV systems are an essential component of any building's fire protection design concept. In case of fire, SHEV systems create and maintain a smoke-free layer above the floor by removing smoke. Simultaneously, they exhaust hot gases released by a fire in the developing stages.

Their value in assisting with the following, is firmly established:

- Evacuation of people from buildings and other construction works
- Reduction of fire damage and financial loss by preventing smoke damage
- Facilitation of firefighting, by improving visibility, reducing roof temperatures and retarding spread

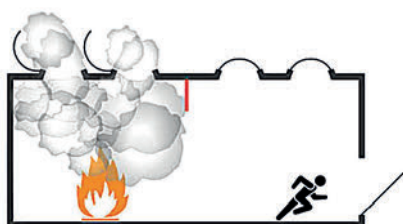


## THE PRINCIPAL OF SMOKE VENTILATION USING SHEV SYSTEMS

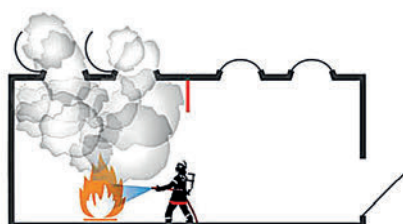
High-level outlet vents and low-level inlet vents open automatically in the event of a fire, allowing cool air into the building and allowing smoke and hot air to flow out.

In the absence of ventilation, smoke fills the room, being drawn back down from the ceiling by convection as temperatures rise.

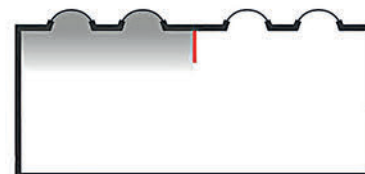
This leads to potential - and highly dangerous - 'flashover'.



1. SHEV opens immediately and aids evacuation



2. Safer and easier to fight fire



3. Damage is avoided or contained

## COXDOME SHEV SYSTEMS

Coxdome SHEV systems provide a smoke and heat exhaust ventilation solution for all commercial and residential applications.

Supplied factory assembled and factory tested, all products are certified to EN12101-2. SHEV systems not only help to provide smoke extraction the event of a fire but they also provide day-to-day controllable ventilation.

Available in a wide range of sizes, the Coxdome SHEV range complies the latest Building Regulations on Fire Safety and can be integrated into any Building Management System.

Linked to a central control panel, complete with battery backup in case of mains failure, the control panel can be triggered from either manual override switches local to the ventilator and the ground floor by dedicated smoke detectors, or by interfacing with a third party smoke detection/fire alarm system.

Available with CLEAR or OBSCURE polycarbonate glazing to enhance the building's natural daylight, or with a fully insulated ALUMINIUM solid cover.

### 2 Specification Options:

- 300mm splayed kerb in PVC-u
- 160mm vertical kerb in PVC-u

ROOFLIGHT SIZE (MM)	AOV RANGE 140°
1000 x 1500	✓
1000 x 1800	
1000 x 1800	
1000 x 2400	
1000 x 2500	
1100 x 1400	
1200 x 1200	✓
1200 x 1500	✓
1200 x 1800	✓
1200 x 2100	✓
1200 x 2200	✓
1200 x 2400	✓
1200 x 2500	✓
1200 x 2700	✓
1200 x 3000	
1300 x 1300	
1200 x 1400	
1500 x 1500	✓
1500 x 1800	✓
1500 x 2500	✓
1500 x 2700	✓
1500 x 3000	✓



Showing 300mm splayed upstand

## AUTOMATIC OPENING VENTS

Opening to 140°, the system offers maximum ventilation. The actuators operate from a 24V DC supply and polarity can be reversed to allow the open and close facility.

- 24V DC actuators
- Fully open in under 60 seconds
- Snow load 300N/m<sup>2</sup>
- Motor can be offset to allow for access – fully tested to EN12101-2

## TECHNICAL SPECIFICATION

- EN12101-2 certified
- Available from 1000x1500mm to 1500x3000mm
- Opens to 140°
- Galvanised steel mechanism
- Glazed polycarbonate or solid aluminium cover
- Optional day-to-day ventilation position with no additional motor
- Extremely low noise level
- Compact 24V motor unit
- Aerodynamic free area up to Aa2.74m
- Snow load up to 2400N/m<sup>2</sup>
- Wind load up to 1500N/m<sup>2</sup>
- Low ambient temperature T(-15°)
- Heat exposure B300
- Reaction to Fire Class E
- Opening speed <60 secs

# SHEV ACCESSORIES

For use with Coxdome SHEV smoke systems

Safety Fall Grid



Control Panels



Break Glass



Wind and Rain Sensor



Smoke Detector



CO<sub>2</sub> Detector





## COXDOME SHEV ACCESSORIES

- Safety fall grids
- 24V / 48V control panel with battery backup
- Emergency break glass push button
- Wind and rain sensor
- Wind deflector
- Smoke detector
- CO2 detector
- Open/close operation for ventilation
- Safety anchor points

## 48V VS 24V SYSTEM

The Coxdome SHEV range can also be specified as a 48V system. This option can provide many additional benefits to multi-unit applications:

### IMPROVED PERFORMANCE

- Less voltage drop between multiple units
- Increased power in the event of heavy snow loads

### COST REDUCTIONS

- Each 48V control panel will operate double the number of SHEV units
- Reduction in cable cross-sectional size
- Significant reduction in installation

## CONTROL PANELS

ITEM NO.	FIXED
216119	SVM 24V-5A BASIC
216219	SVM 24V-5A COMFORT
216317	SVM 24V-5A FIRE
216417	SVM 24V-5A COMFORT & FIRE
217119	SVM 24V-8A BASIC
217219	SVM 24V-8A COMFORT
217317	SVM 24V-8A FIRE
217417	SVM 24V-8A COMFORT & FIRE
218219	SV 24V-24A-DS
218269	SV 24V-30A-DS
218319	SV 24V-32A-DS
218419	SV 48V-8A-DS
218519	SV 48V-24A-DS
218569	SV 48V-30A-DS
218619	SV 48V-32A-DS

## ACCESSORIES

ITEM NO.	FIXED
111729	Firemans Priority Switch
111790	Breakglass
111724	Breakglass (Outdoor use)
111730	Wind & Rain Sensor 24V
111740	Smoke Detector
111735	Heat Detector
111778	Room Thermostat
111760	Weekly Timer
111753	Comfort Switch (open/close)
	Safety Falls Grid
	Wind Deflectors

# SHEV

In the event of a building fire, SHEV systems are the recognised solution for smoke and heat exhaust ventilation in all commercial and residential applications.



Product Code	SIZE	300 High UPVC Upstand		300 High Metal Upstand		400 High Metal Upstand	
		DOUBLE	TRIPLE	DOUBLE	TRIPLE	DOUBLE	TRIPLE
CSHEV1	1000 x 1500	£2561	£2704	£2453	£2596	£2799	£2643
CSHEV2	1200 x 1200	£2351	£2479	£2246	£2375	£2293	£2422
CSHEV3	1200 x 1500	£2577	£2749	£2473	£2645	£2524	£2696
CSHEV4	1200 x 1800	£2776	£2976	£2662	£2861	£2714	£2913
CSHEV5	1200 x 2100	£2921	£3126	£2815	£3019	£2873	£3077
CSHEV6	1200 x 2400	£2958	£3186	£2838	£3067	£2897	£3125
CSHEV7	1200 x 2500	£3078	£3352	£2996	£3270	£3054	£3327
CSHEV8	1250 x 1250	£2418	£2560	£2316	£2459	£2366	£2508
CSHEV9	1250 x 2500	£3120	£3414	£3012	£3304	£3071	£3362
CSHEV10	1500 x 1500	£2807	£3013	£2683	£2889	£2736	£2941
CSHEV11	1500 x 1800	£3065	£3290	£2770	£3181	£3012	£3237
CSHEV12	1500 x 2100	£3230	£3484	£3123	£3375	£3179	£3430
CSHEV13	1500 x 2400	£3372	£3651	£3268	£3546	£3329	£3608
CSHEV14	1500 x 2500	£3412	£3696	£3306	£3591	£3366	£3652

## 160mm Vertical Upstand

Product Code	FINISHED OPENING SIZE (MM)	DOUBLE SKIN CLEAR/OBSCURE POLYCARBONATE	TRIPLE SKIN CLEAR/OBSCURE POLYCARBONATE	ALUMINIUM SOLID TOP
C160SHEV1	700 x 700	£2,009	£2,093	£2,009
C160SHEV2	750 x 750	£2,047	£2,134	£2,047
C160SHEV3	700 x 1000	£2,092	£2,192	£2,092
C160SHEV4	700 x 1300	£2,234	£2,356	£2,234
C160SHEV5	700 x 1600	£2,363	£2,525	£2,363
C160SHEV6	700 x 2200	£2,903	£3,150	£2,903
C160SHEV7	800 x 800	£2,062	£2,151	£2,062
C160SHEV8	800 x 1000	£2,115	£2,217	£2,115
C160SHEV9	800 x 1100	£2,198	£2,317	£2,198
C160SHEV10	800 x 1300	£2,338	£2,496	£2,338
C160SHEV11	800 x 1500	£2,398	£2,511	£2,398
C160SHEV12	800 x 1700	£2,439	£2,623	£2,439
C160SHEV13	900 x 900	£2,154	£2,261	£2,154
C160SHEV14	900 x 1200	£2,396	£2,573	£2,396
C160SHEV15	900 x 1500	£2,447	£2,627	£2,447

Product Code	FINISHED OPENING SIZE (MM)	DOUBLE SKIN CLEAR/OBSCURE POLYCARBONATE	TRIPLE SKIN CLEAR/OBSCURE POLYCARBONATE	ALUMINIUM SOLID TOP
C160SHEV16	900 x 1800	£2,710	£2,923	£2,710
C160SHEV17	1000 x 1000	£2,058	£2,172	£2,058
C160SHEV18	1000 x 1200	£2,235	£2,371	£2,235
C160SHEV19	1000 x 1500	£2,461	£2,647	£2,461
C160SHEV20	1000 x 1600	£2,512	£2,629	£2,512
C160SHEV21	1000 x 1800	£2,861	£3,005	£2,861
C160SHEV22	1000 x 2000	£3,001	£3,245	£3,001
C160SHEV23	1000 x 2200	£3,079	£3,369	£3,079
C160SHEV24	1100 x 1100	£2,304	£2,446	£2,304
C160SHEV25	1100 x 1700	£2,719	£2,919	£2,719
C160SHEV26	1100 x 2200	£3,065	£3,301	£3,065
C160SHEV27	1200 x 1200	£2,445	£2,624	£2,445
C160SHEV28	1200 x 1500	£2,678	£2,819	£2,678
C160SHEV29	1200 x 1800	£2,899	£3,102	£2,899

# SHEV ACCESSORIES

A range of environmental controls and sensors for use with Coxdome SHEV systems.



## Control Panels

Item No.	DESCRIPTION	PRICE
216119	SVM 24V-5A BASIC	£626
216219	SVM 24V-5A COMFORT	£647
216317	SVM 24V-5A FIRE	£664
216417	SVM 24V-5A COMFORT & FIRE	£675
217119	SVM 24V-8A BASIC	£669
217219	SVM 24V-8A COMFORT	£691
217317	SVM 24V-8A FIRE	£708
217417	SVM 24V-8A COMFORT & FIRE	£730
218219	SV 24V-24A-DS	£1157
218269	SV 24V-30A-DS	£1217
218319	SV 24V-32A-DS	£1314
218419	SV 48V-8A-DS	£1129
218519	SV 48V-24A-DS	£1586
218569	SV 48V-30A-DS	£1644
218619	SV 48V-32A-DS	£1932

## Accessories

Item No.	DESCRIPTION	PRICE
111729	Fireman's Priority Switch	£117
111790	Breakglass	£87
111724	Breakglass (outdoor use)	£282
111730	Wind & Rain Sensor 24V	£145
111740	Smoke Detector	£110
111735	Heat Detector	£70
111778	Room Thermostat	£142
111760	Weekly Timer	£73
111753	Comfort Switch (open/close)	£77
	Safety Fall Grids	POA
	Wind Deflectors	POA

## ACCESS HATCHES

Provides safe roof access for occasional inspection and maintenance.



	RO16 160mm Vertical Upstand	Polycarbonate Dome		Polycarbonate Pyramid	
Product Code	UPSTAND OPENING SIZE (MM)	DOUBLE SKIN	TRIPLE SKIN	DOUBLE SKIN	TRIPLE SKIN
CRE1	500 x 1000	£761	£854	£951.25	£1067.50
CRE2	600 x 600	£667	£738	£833.75	£922.50
CRE3	600 x 900	£790	£890	£987.50	£1112.50
CRE4	700 x 700	£724	£807	£905	£1008.75
CRE5	700 x 1000	£813	£918	£1016.25	£1147.50
CRE6	800 x 800	£769	£863	£961.25	£1078.75
CRE7	800 x 1300	£1049	£1215	£1311.25	£1518.75
CRE8	800 x 1800	£1204	£1382	£1505	£1727.50
CRE9	900 x 900	£859	£974	£1073.75	£1217.50
CRE10	900 x 1200	£1111	£1297	£1388.75	£1621.25
CRE11	1000 x 1000	£923	£1051	£1153.75	£1313.75
CRE12	1000 x 1300	£1116	£1297	£1395	£1621.25
CRE13	1000 x 1600	£1153	£1340	£1441.25	£1675
CRE14	1000 x 2000	£1359	£1653	£1698.75	£2066.25
CRE15	1200 x 1200	£1146	£1326	£1432.50	£1657.50

		WITH SF15 UPSTAND		WITH BF30 UPSTAND		WITH SF15 UPSTAND		WITH BF30 UPSTAND	
	UPSTAND OPENING SIZE (MM)	Polycarbonate Dome		Polycarbonate Dome		Polycarbonate Pyramid		Polycarbonate Pyramid	
Product Code		DOUBLE	TRIPLE	DOUBLE	TRIPLE	DOUBLE	TRIPLE	DOUBLE	TRIPLE
CRA1	700 x 1200	£671	£764	£776	£869	£839	£955	£970	£1086
CRA2	750 x 900	£655	£809	£617	£771	£819	£1011	£771	£964
CRA3	800 x 800	£574	£645	£677	£748	£718	£806	£846	£935
CRA4	800 x 1100	£697	£797	£799	£899	£871	£996	£999	£1124
CRA5	900 x 900	£639	£722	£735	£818	£799	£903	£919	£1023
CRA6	900 x 1200	£714	£819	£825	£930	£893	£1024	£1031	£1163
CRA7	1000 x 1000	£677	£771	£779	£873	£846	£964	£974	£1091
CRA8	1000 x 1500	£949	£1115	£1063	£1229	£1186	£1394	£1329	£1536
CRA9	1100 x 1100	£763	£878	£870	£985	£954	£1098	£1088	£1231
CRA10	1200 x 1200	£822	£950	£936	£1064	£1028	£1188	£1170	£1330
CRA11	1200 x 1500	£1007	£1189	£1131	£1313	£1259	£1486	£1414	£1641



# SUNPIPE

For the effective transfer of daylight into poorly lit rooms where the use of a rooflight is not possible. Ideal for land-locked rooms.



## NEW PRICES

## NEW PRICES

	FLAT ROOF		PITCH ROOF	
	D250	D350	D250	D350
Price	£463	£572	£647	£822
Diameter	250mm	350mm	250mm	350mm
Insulated Aluminium Upstand	✓	✓		
Plastic Tile Flashing			✓	✓
External Dome	✓	✓	✓	✓
Dome Tube - 300mm	✓	✓		
Dome Tube 0-45° - 300mm			✓	✓
Ceiling Tube - 300mm	✓	✓	✓	✓
Ceiling Trim (Brushed Alloy)	✓	✓	✓	✓
Diffuser	✓	✓	✓	✓
<b>Accessories</b>	<b>D250</b>	<b>D350</b>		
Extension Pipe	£75	£95		
Elbow (up to 45 degrees)				
Inner Dome				
Mounting Bracket	£13	£13		
Tube Dimmer	£441	£517		
Adaptor for Daylight Regulator	£86	£86		
Positioner Daylight Dimmer	£144	£144		

## NOTES

This image shows a single sheet of white paper with horizontal ruling lines. The lines are evenly spaced and run across the width of the page. There are no margins, text, or other markings on the paper.

## NOTES

This image shows a single sheet of white paper with horizontal ruling lines. The lines are evenly spaced and run across the width of the page. There are no margins, text, or other markings on the paper.



Unit 3, Vaughan Park,  
Tipton Road,  
Tipton, DY4 7UJ

**T:** 0121 530 4230

**E:** [sales@coxdome.co.uk](mailto:sales@coxdome.co.uk)

**W:** [www.coxdome.co.uk](http://www.coxdome.co.uk)

